

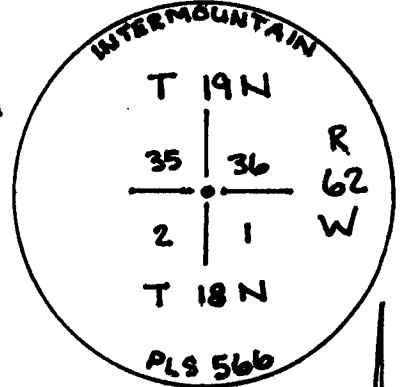
State of Wyoming Corner Record

(In compliance with the *CORNER PERPETUATION AND FILING ACT*, Wyoming Statutes, 1977, Section 36-11-101, et. seq., and the Rules and Regulations of the Board of Registration for Professional Engineers and Professional Land Surveyors)

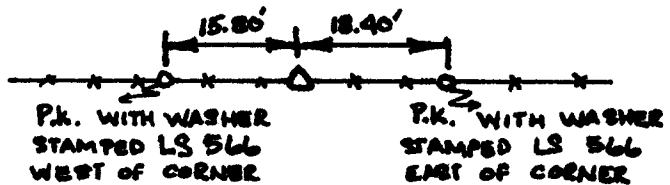
Reverse side of this form may be used if more space is needed.

Record of original survey and citation of source of historical information (if corner is lost or obliterated).
 Description of corner monumentation evidence found and/or monument and accessories established to perpetuate the location of this corner. Sketch of relative location of monument, accessories, and reference points with course and distance to adjacent corner(s) (if determined in this survey). Method and rationale for reestablishment of lost or obliterated corner.

FOUND: GRANITE STONE 8" x 10" x 12"
SET: 3/4" ALUMINUM CAP ON ALUMINUM PIPE STAMPED AS SHOWN
REFERENCES SET: P.K. NAILS WITH WASHERS
STAMPED LS 566 IN TOP OF FENCE POSTS
GLO RECORD: GRANITE STONE 16" x 9" x 7"
NOTE: STONE BURIED NEXT TO MONUMENT



LARAMIE COUNTY CLERK
 CHEYENNE, WY.
 '96 SEP 13 AM 10 58
 189575



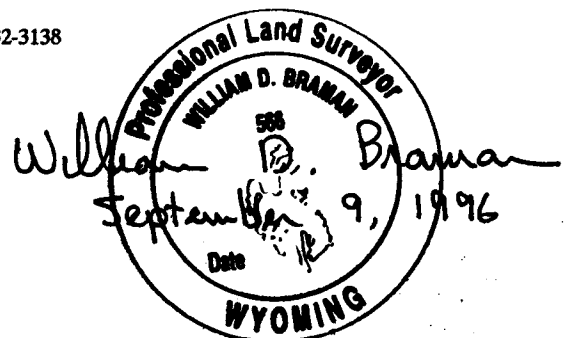
Date of Field Work: JULY 5, 1995 Office Reference: 2851

CROSS INDEX DIAGRAM

1	2	3	4	5	6	7	8	9	10	11	12	13	14	15	16	17	18	19	20	21	22	23	24	25	
A																									
B																									
C	0																								
D																									
E																									
F																									
G	7	8	9																						
H																									
I																									
J																									
K																									
L	13	14	15	16	17	18	19	20	21	22	23	24	25	26	27	28	29	30	31	32	33	34	35	36	
M																									
N																									
O																									
P	19	20	21	22	23	24	25	26	27	28	29	30	31	32	33	34	35	36	37	38	39	40	41	42	
Q																									
R																									
S																									
T	29	30	31	32	33	34	35	36	37	38	39	40	41	42	43	44	45	46	47	48	49	50	51	52	
U																									
V																									
W																									
X	31	32	33	34	35	36	37	38	39	40	41	42	43	44	45	46	47	48	49	50	51	52	53	54	
Y																									
Z																									

Firm/Agency, Address
 INTERMOUNTAIN PROFESSIONAL SERVICES, INC.
 5801 OSAGE AVENUE
 CHEYENNE WY 82001
 Telephone Number: (307) 632-3138

This corner record was prepared by me or under my direction and supervision.
 SEAL & SIGNATURE



Corner Name: SEC COR 35/36 Section: T 18N R 62W 6 P.M. Cross-Index No.: A-21
2/1 19N 62W 6 E-21